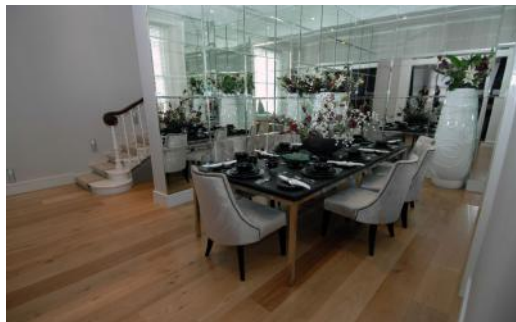


6BEDROOM HOUSE , SW3



**£12,900,000**

This luxurious, superbly presented fabulous five bedroom house has been totally refurbished and interior designed to a very high standard, walking distance from Hyde Park. Queensberry Place is located in the heart of South Kensington, moments from the world class cultural facilities of the area with The Natural History Museum and the Victoria and Albert Museum on it's doorstep.

**TO ARRANGE A VIEWING CALL [020 7060 9177](tel:02070609177)**